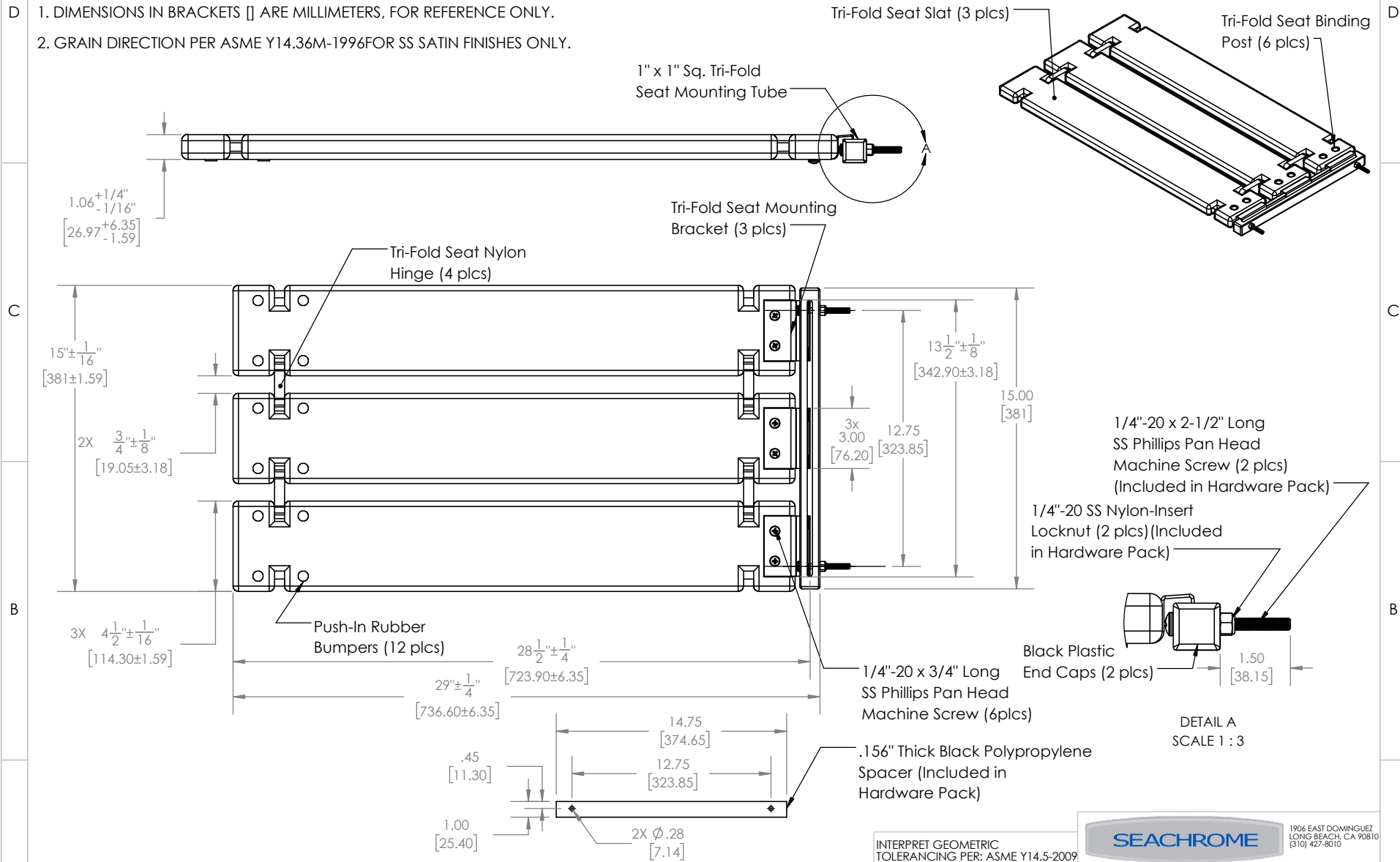


**NOTES:**

1. DIMENSIONS IN BRACKETS [ ] ARE MILLIMETERS, FOR REFERENCE ONLY.
2. GRAIN DIRECTION PER ASME Y14.36M-1996 FOR SS SATIN FINISHES ONLY.

**CUSTOMER SPECIFICATION DWG**



- HARDWARE PACKAGE INCLUDES:**
1. #12X3" LONG PHILLIPS PAN HEAD SS SHEET METAL SCREWS, QTY 2
  2. 1/4-20X2-1/2" LONG PHILLIPS TRUSS HEAD SS MACHINE SCREW, QTY 2
  3. 1/4-20 NYLOCK NUT, QTY 2
  4. BLACK POLYPROPYLENE SPACER, QTY 1

**Proprietary & Confidential**

This drawing and the information contained herein is the property of Seachrome Corporation and shall not be reproduced, copied, or disclosed in whole or in part, or used in manufacturing, or for any other purpose without the written permission of Seachrome Corporation.

INTERPRET GEOMETRIC TOLERANCING PER: ASME Y14.5-2009  
 UNLESS OTHERWISE SPECIFIED:  
 DIMENSIONS ARE IN INCHES [MM]  
 TOLERANCES: DECIMALS  
 FRACTIONAL ±1/64 .X ±0.1  
 ANGLES ± 1° .XX ±0.05

DRAWN J. AMOZOC 6/16/21  
 ENG APPR. J. AMOZOC 6/16/21

<b>SEACHROME</b>		1906 EAST DOMINGUEZ LONG BEACH, CA 90810 (310) 427-8010	
CORPORATION			
TITLE: <b>PORTABLE TRI-FOLD TUB SEAT</b>			
DWG. NO.	TFRS-290150-MW	REV B	
SIZE	A DO NOT SCALE DRAWING	SCALE: 1:10	SHEET 1