

4

3

2

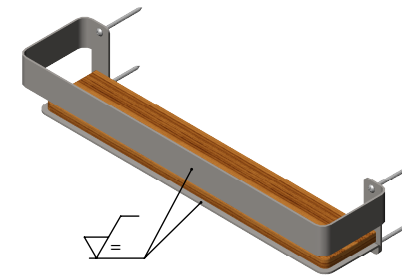
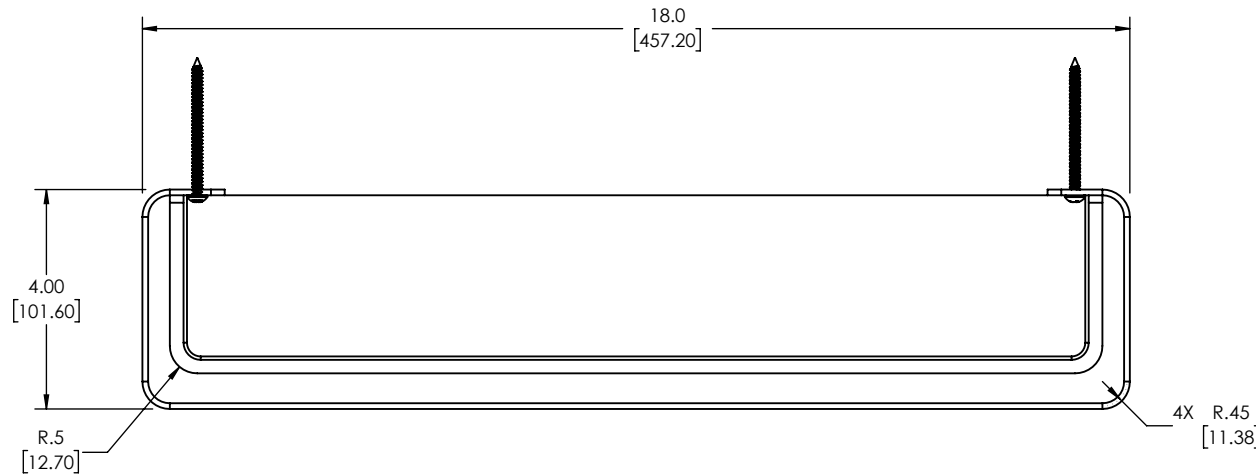
1

NOTES: UNLESS OTHERWISE SPECIFIED

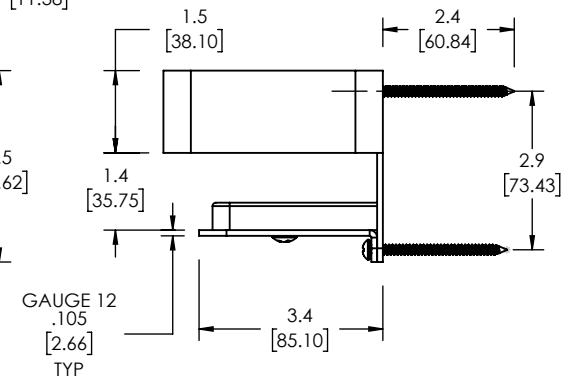
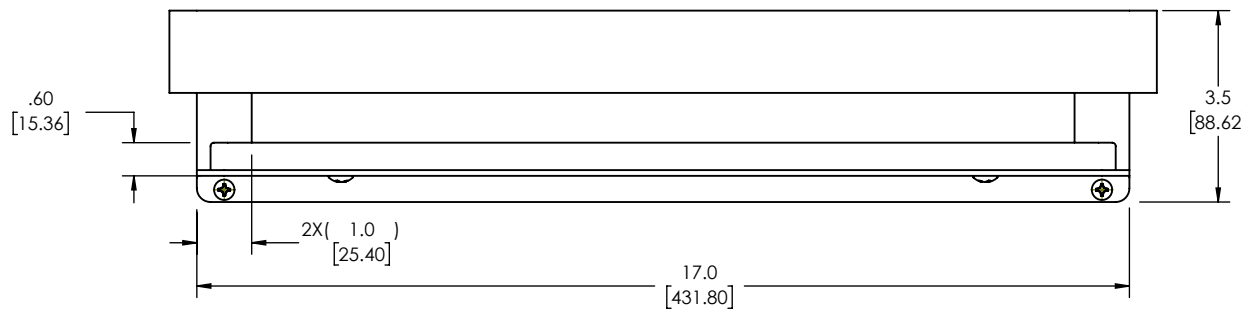
CUSTOMER SPECIFICATION DRAWING

1. DIMENSIONS IN BRACKETS [] ARE MILLIMETERS, FOR REFERENCE ONLY.

REVISIONS			
REV.	DESCRIPTION	DATE	APPROVED
-	PRODUCTION RELEASE	09JAN23	A. B.



ISOMETRIC VIEW



PRODUCT SPECIFICATION

-CLIENT:
-MATERIAL:

COMPLETE PART NUMBER: (EXAMPLE: 700-7005-TWA-SS)

-AVAILABLE FINISHES (PN) [CUSTOMER PN]:

- 1. SATIN STAINLESS STEEL 700-7005-TWA-SS
- 2. POLISHED STAINLESS STEEL 700-7005-TWA-PS

-POWDER COAT (PN) [CUSTOMER PN]:

- 1. MATTE BLACK 700-7005-TWA-MB
- 2. WHITE 700-7005-TWA-WT
- 3. MATTE WHITE 700-7005-TWA-MWT

-HARDWARE PACKAGE INCLUDES:
1. #10 X 2-1/2" PHIL PAN "A" SS PN S-4500-110066 QTY 4

PROPRIETARY AND CONFIDENTIAL
THIS DRAWING AND THE INFORMATION CONTAINED HEREIN IS PROPERTY TO SEACHROME COR. AND SHALL NOT BE REPRODUCED, COPIED OR DISCLOSED IN WHOLE, OR PART, OR USED OF MANUFACTURING OR FOR ANY OTHER PURPOSE WITHOUT THE WRITTEN PERMISSION OF SEACHROME CORPORATION.

INTERPRET GEOMETRIC TOLERANCING PER: ASME Y14.5-2009
UNLESS OTHERWISE SPECIFIED:
DIMENSIONS ARE IN INCHES [MM]
TOLERANCES: DECIMALS
FRACTIONAL ±1/64 .X ±0.1
ANGLES ± 1° .XX ±0.02

DRAWN A. BACA 09JAN23
ENG APPR.

SEACHROME CORPORATION
1906 EAST DOMINGUEZ LONG BEACH, CA 90810 (310) 427-8010

TITLE: SHOWER SHELF, 18.00" L, WOOD CLAD

DWG. NO. 700-7005-TWA REV -
SIZE A DO NOT SCALE DRAWING SCALE: 1:2 SHEET 1

4

3

2

1