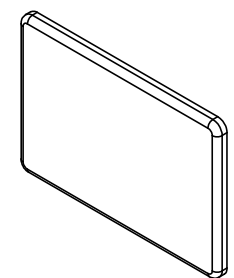
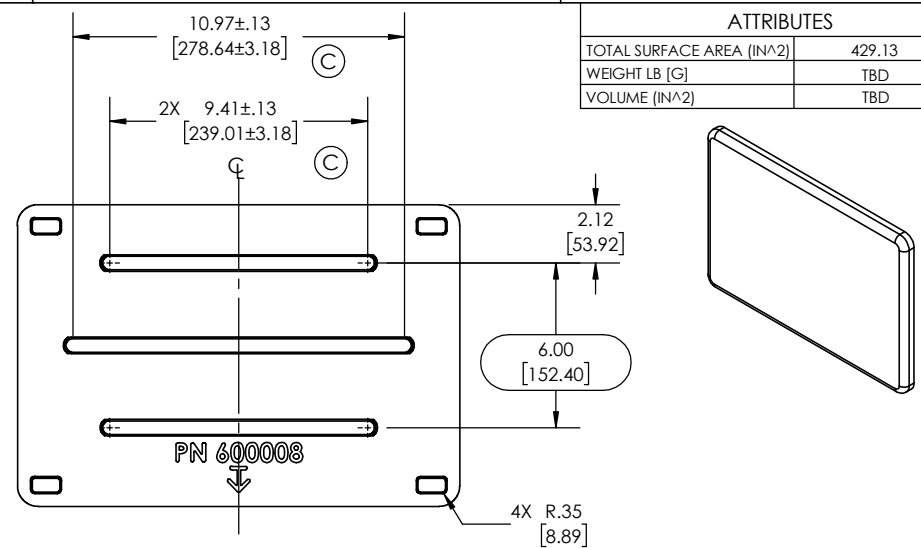


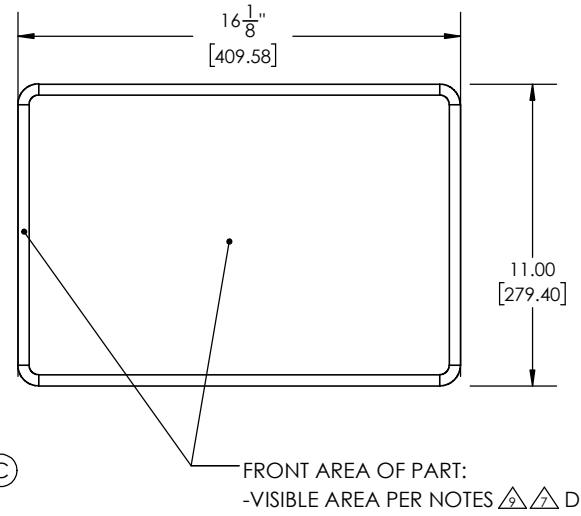
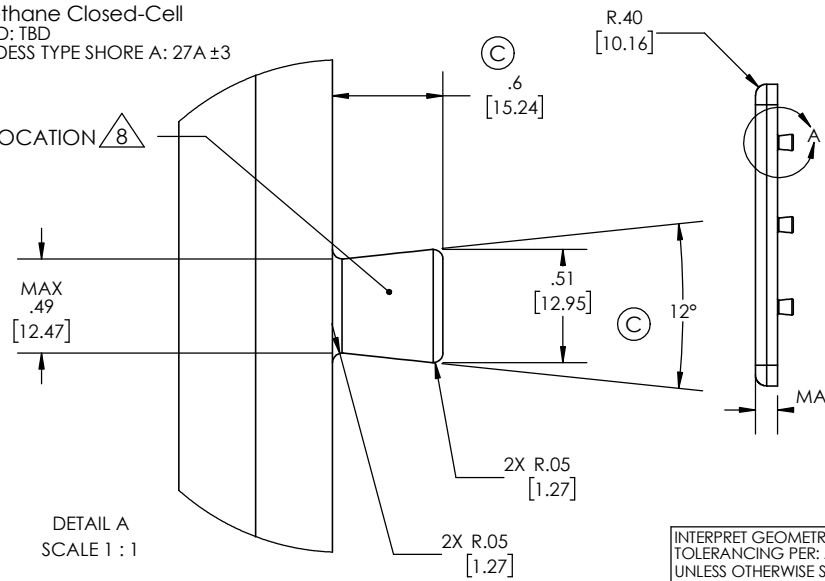
NOTES:

1. ALL DIMENSIONS & DETAIL NOT SHOWN ON PRINT WILL BE TAKEN FROM CAD MODELS.
2. PART IS AESTHETIC: AESTHETIC DIMENSIONS SHALL NOT AFFECT FIT AND FUNCTION OF PART.
3. DIMENSIONS IN BRACKETS [] ARE MILLIMETERS AND FOR REFERENCE ONLY.
4. ALL DRAFF TO BE 1.5° UNLESS OTHERWISE SPECIFIED
5. UNLESS OTHERWISE SPECIFIED RADII TO BE .030"
6. THE FOLLOWING MUST BE APPROVED BY SEACHROME ENGINEERING
 - A. PRIOR TO TOOLING START:
 1. PARTING LINE, MOLD SECTION LINES, GATE AND EJECTOR PIN LOCATIONS.
 - B. PRIOR TO INITIAL PRODUCTION:
 1. GATE REMOVAL, FLASH ALLOWANCE OR REMOVAL, AND FINISH STOCK ALLOWANCE.
 2. SINK MARKS AND THER SURFACE DEFECTS.
 3. COLOR AND FINAL APPEARANCE.
 4. FINISH COMPLIANCE, PARTS MUST BE TESTED AT SEACHROME.
7. UNLESS OTHERWISE SPECIFIED:
 - A. EJECTOR PIN MARKS TO BE FLUSH WITH, TO .005 [0,127] MAX DEPRESSED BELOW SURFACE.
 - B. MOLD MISMATCH AT PARTING LINE TO BE .0015 [0,038] MAX AND NOT VISIBLE AT "ARMS LENTGH".
 - C. MAXIMUM FLASH ALLOWED: .0015 [0,038]
 - D. NO SINK, KNIFE EDGES, OR FLASH PERMISSIBLE ON VISIBLE EXTERIOR SURFACES.
8. GATE LOCATION, GATE ALLOWED TO PROTRUDE OUTWARD .012 [0,3 MM] MAX
9. PART SURFACE TEXTURE PER S.P.I. MOLD FINISH D3 OR PT-113: Ra 190-230 MICRO INCHES.
10. MATERIAL: Polyurethane Closed-Cell
 - A. COLOR MATCHED: TBD
 - B. DUROMETER HARDESS TYPE SHORE A: 27A ±3

ATTRIBUTES	
TOTAL SURFACE AREA (IN^2)	429.13
WEIGHT LB [G]	TBD
VOLUME (IN^2)	TBD



APPROVED GATE LOCATION



INTERPRET GEOMETRIC TOLERANCING PER: ASME Y14.5-2009
 UNLESS OTHERWISE SPECIFIED:
 DIMENSIONS ARE IN INCHES [MM]
 TOLERANCES: DECIMALS
 FRACTIONAL ±1/64 X ±0.1
 ANGLES ±3° .XX ±0.05
 BEND ±1° .XXX ±0.030
 (XX) DENOTES CRITICAL DIMENSION
 ALL THREADS ARE CRITICAL
 MATERIAL: Polyurethane Closed-Cell

-----	-----
NEXT ASSY	USED ON
APPLICATION	
DRAWN J. AMOZOC	10/16/19
CHECKED J. AMOZOC	10/16/19
ENG APPR. J. AMOZOC	10/16/19
MFG APPR. R. CANO	10/16/19
Q.A. -----	XX/XX/XX



ZONE	REV	ECN NO./DESCRIPTION	DATE	APPROVED
C	-	Modified Dim. to match production part	8/24/21	J.A.
B	-	THICKNESS WAS .4 IS .8	7/1/21	J.A.
A	-	REMOVED MIDDLE RIB	6/18/21	J.A.
-	-	RELEASED FOR QUOTING	11/21/20	J.A.

Proprietary & Confidential
 This drawing and the information contained herein is the property of Seachrome Corporation and shall not be reproduced, copied, or disclosed in whole or in part, or used in manufacturing, or for any other purpose without the written permission of Seachrome Corporation.

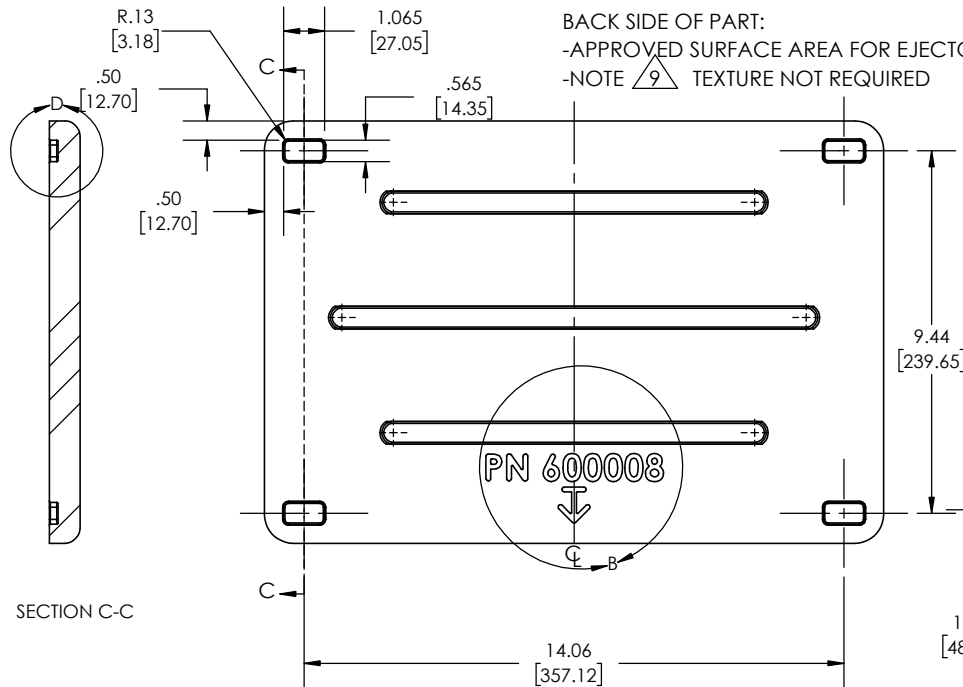
TESTING	-----
ASSEMBLY	-----
POLISHING	-----
MACHINING	-----
TOOLING FIXTURE #	-----

DO NOT SCALE DRAWING	SIZE A	SCALE: 1:5	SHEET 1 OF 2
----------------------	---------------	------------	--------------

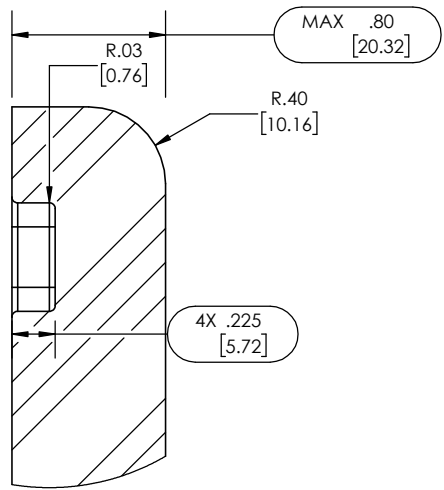
TITLE: **Seat/Back Rest Pad**

NOTES:

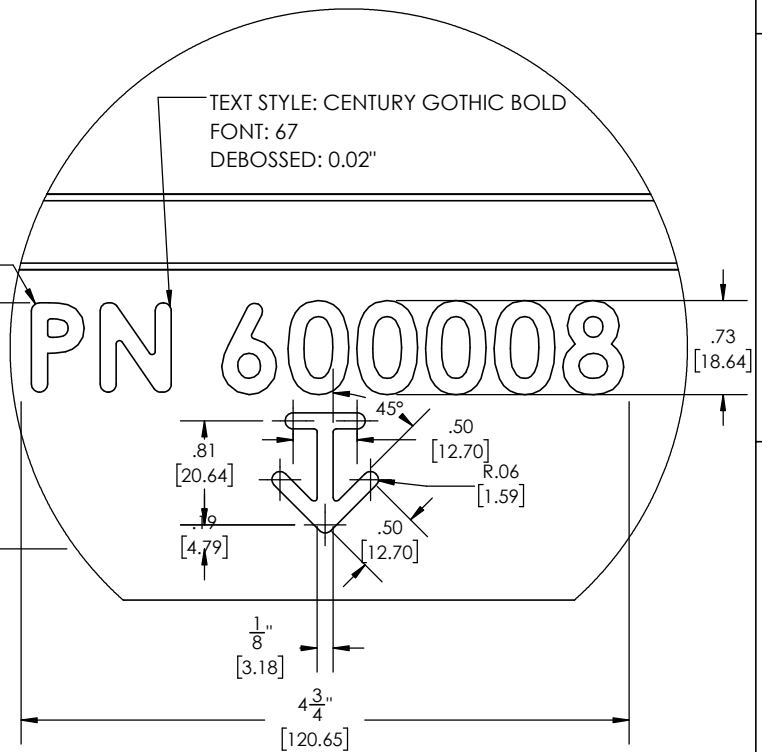
BACK SIDE OF PART:
 -APPROVED SURFACE AREA FOR EJECTOR PIN LOCATION
 -NOTE $\triangle 9$ TEXTURE NOT REQUIRED



SECTION C-C



DETAIL D
SCALE 1 : 1



DETAIL B
SCALE 1 : 1.5

Proprietary & Confidential

This drawing and the information contained herein is the property of Seachrome Corporation and shall not be reproduced, copied, or disclosed in whole or in part, or used in manufacturing, or for any other purpose without the written permission of Seachrome Corporation.

SEACHROME		1906 EAST DOMINGUEZ LONG BEACH, CA 90810 (310) 427-8010	
CORPORATION			
TITLE: Seat/Back Rest Pad			
DWG. NO.	600008	REV	C
SIZE	A	SCALE: 1:5	SHEET 2 OF 2