

# SEACHROME

Seachrome Corporation  
1906 East Dominguez Street  
Long Beach, California 90810  
Phone: (800) 955-2476  
Fax: (800) 444-3380

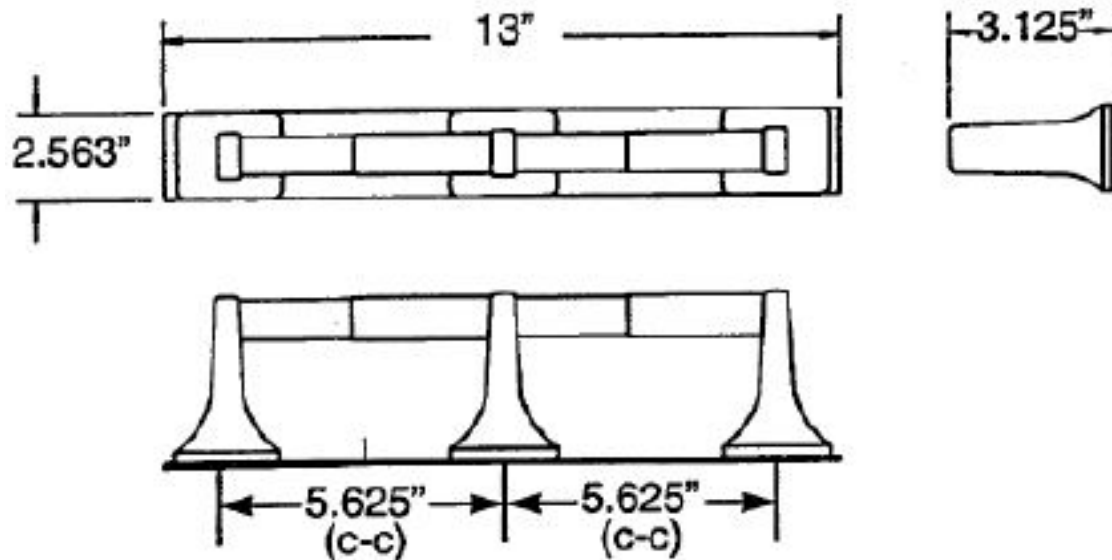
Description:

## SCM-R5580 Double Roll Surface Paper Holder

Customer:

Customer Part #

08-17-2015



### Specifications:

Paper Holder brackets are die cast from highest quality zinc alloy (zamac) with a triple plated polished chrome finish. Mounting brackets are steel and riveted to 1/8" thick brushed aluminum wall plate. Rollers are plastic and spring loaded.

All Chrome Bath Hardware Is Triple Plated With Copper, Nickel And Chromium For Long Lasting Beauty, And Meet ASTM-B86 Standards.

This drawing and the information contained herein is proprietary to Seachrome Corp. and shall not be reproduced, copied or disclosed in whole, or part, or used for manufacturing or for any other purpose without the written permission of Seachrome Corporation.

### Installation:

Remove rollers. Loosen set screw at the base of each post and separate posts from wall plate. Mount wall plate with two 1/8" steel screws. Re-attach posts to wall plate. Tighten set screw. Re-insert rollers.

Note: Wood blocking is preferable behind all surfaces where screw installation is required. If wood blocking is not available, the following fasteners may be used:  
Tile / Masonry – Plastic or Lead Anchors; Plaster / Drywall – Toggle Bolts.

