

# SEACHROME

Seachrome Corporation  
1906 East Dominguez Street  
Long Beach, California 90810  
Phone: (800) 955-2476  
Fax: (800) 444-3380

Description:

## SCAL-194-SM

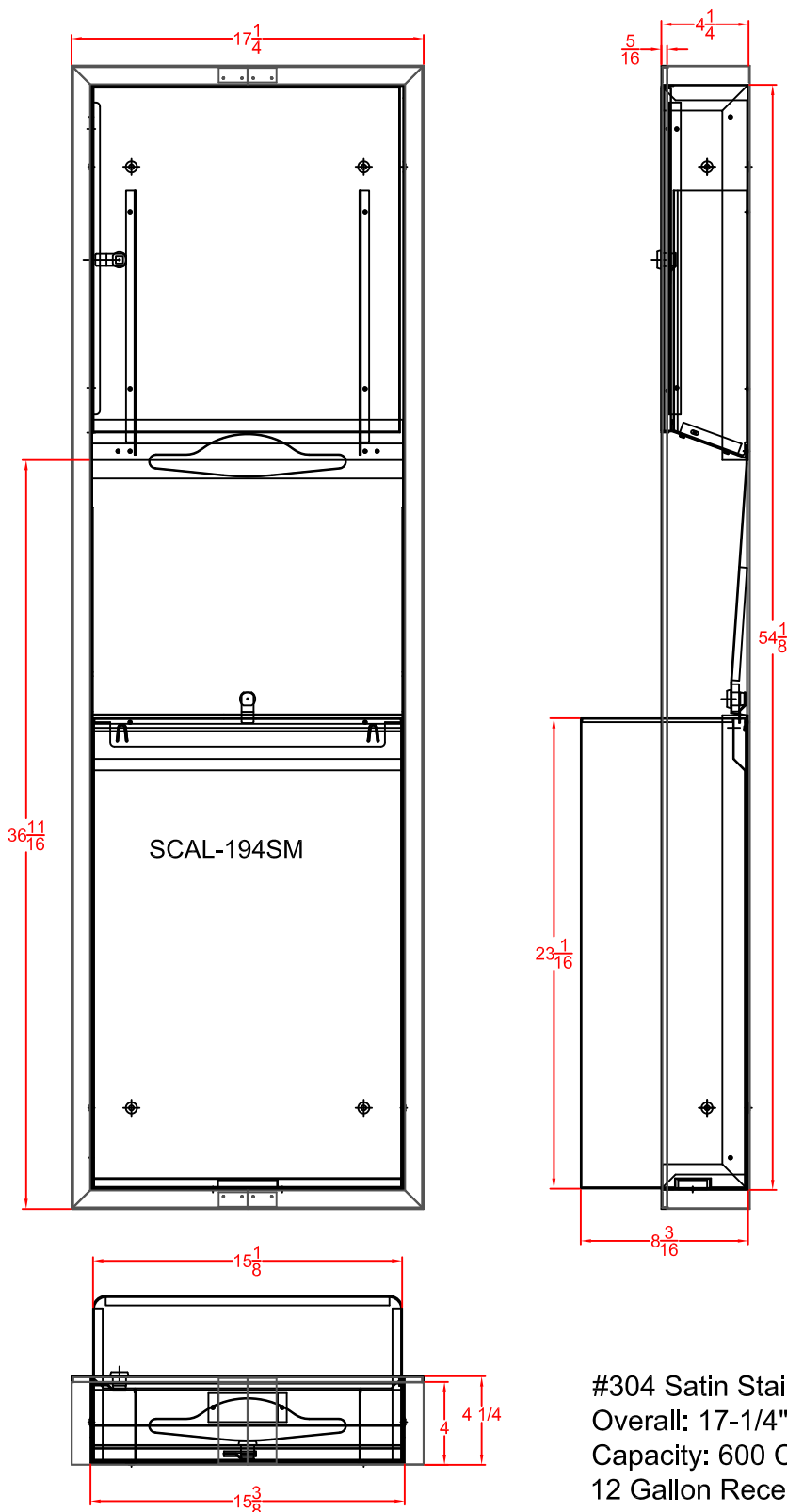
Locking Surface Mount Paper Towel  
Dispenser / Waste Receptacle

Customer:

Customer Part #

08-20-2015

This drawing and the information contained herein is proprietary to Seachrome Corp. and shall not be reproduced, copied or disclosed in whole, or part, or used for manufacturing or for any other purpose without the written permission of Seachrome Corporation.



#304 Satin Stainless Steel

Overall: 17-1/4" Wide x 56" High x 8-3/16" Deep.

Capacity: 600 C-Fold / 800 Multi-Fold Paper Towels  
12 Gallon Receptacle

# SEACHROME

Seachrome Corporation  
1906 East Dominguez Street  
Long Beach, California 90810  
Phone: (800) 955-2476  
Fax: (800) 444-3380

Description:

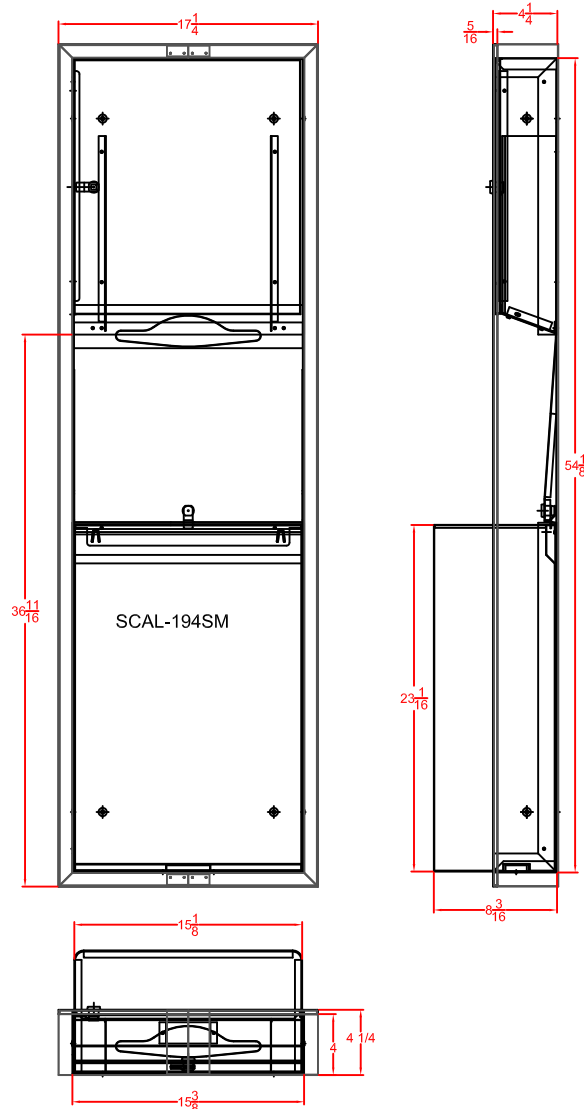
## SCAL-194-SM

### Locking Surface Mount Paper Towel Dispenser / Waste Receptacle

Customer:

Customer Part #

08-20-2015



## Specifications:

### DETAILS:

Surface Mount combination towel cabinet and waste receptacle is fabricated of stainless steel with exposed surfaces in satin finish. The cabinet door is constructed of 22 gauge stainless steel with full length hinge and secured with keyed lock. Removable 12 gallon waste receptacle.

**OPERATION:** Towel dispenser holds multi-fold or C-fold towels without use of special adapter. 22 gauge stainless steel waste receptacle is removable for easy servicing.

**OVERALL SIZE:** 17-1/4" Wide x 56" High x 8" Deep

**CAPACITY:** 600 C-Fold / 800 Multi-Fold Paper Towels. Removable 12 gallon waste receptacle.

**ADA COMPLIANT:** Consult local and national codes for proper installation guidelines.

## Installation:

Provide an area on mounting surface at desired or specified location. Secure to framing at holes provided with mounting screws (included).

This drawing and the information contained herein is proprietary to Seachrome Corp. and shall not be reproduced, copied or disclosed in whole, or part, or used for manufacturing or for any other purpose without the written permission of Seachrome Corporation.