

# SEACHROME

Seachrome Corporation  
 1906 East Dominguez Street  
 Long Beach, California 90810  
 Phone: (800) 955-2476  
 Fax: (800) 444-3380

Description:

## WALL TO FLOOR WITH LEG (Left Hand)

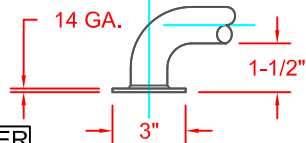
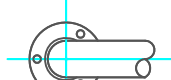
Seachrome Part #  
 GSWL-Series

Customer Part #

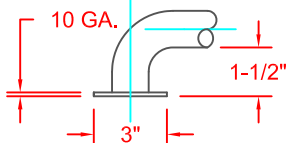
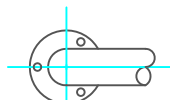
11-27-2012

### FLANGE STYLES

#### EXPOSED SCREW FLANGES

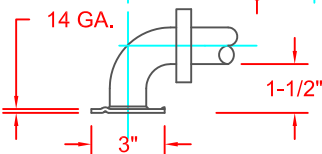
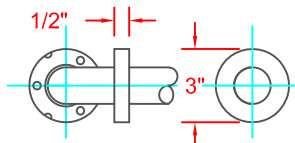


ER



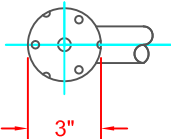
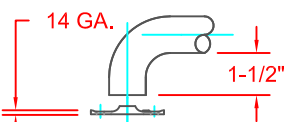
EW

#### CONCEALED SCREW FLANGES



CR

#### CONCEALED BOLT-ON



CB

### TUBING MATERIAL:

- "S" = Type 304 (18-8) Stainless Steel     "B" = 260 Alloy Solid Brass
- "D" = PVD finish over type 304 (18-8) Stainless Steel (Specify Color \_\_\_\_\_ )
- "P" = Powdercoated type 304 (18-8) Stainless Steel (Specify Color \_\_\_\_\_ )

### TUBING SIZE:

- "Q" = 1-1/4" (32mm) O.D. x .049" (18ga.) (1.2mm) Wall Thickness.
- "H" = 1-1/2" (38mm) O.D. x .049" (18ga.) (1.2mm) Wall Thickness

### FLANGE STYLE:

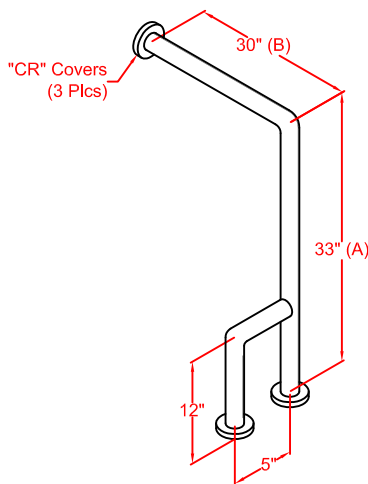
The following mounting flanges are constructed of Type 304 (18-8) Stainless Steel, Heliarc Welded to the bar to form an integral structural unit.

- "ER" 14 ga. (2.0mm) x 3" (76mm) dia. on 1-1/4" bars.  
 12 ga. (2.8mm) x 3" (76mm) dia. on 1-1/2" bars.
- "EW" 10 ga. (3.6mm) x 3" (76mm) dia.
- "CR" 14 ga. (2.0mm) x 3" (76mm) dia. on 1-1/4" bars.  
 12 ga. (2.8mm) x 3" (76mm) dia. on 1-1/2" bars.
- "CB" 14 ga. (2.0mm) x 3" (76mm) dia.

The following flange is constructed of type 304 (18-8) Stainless Steel bolted to a threaded insert to form a structural unit.

### WALL CLEARANCE:

On straight bars, the standard wall clearance between the finished wall surface and the inner bar edge is 1-1/2" (38mm). Other Clearances upon request.



Left Hand Shown

### MADE IN THE USA

All bars meet Federal specifications WW-P 541/8b, Amendment 1, 16 April, 1990 ANSI 117.1 all FHA, VA & HUD specifications and

### COMPLIES WITH ALL ADA REQUIREMENTS



S= Satin #304 Stainless Steel  
 X= Polished #304 Stainless Steel  
 Y= Peened w/satin ends  
 Z= Peened w/polished ends  
 B= Polished #260 Brass  
 P= Powder Coated #304 Stainless  
 D= PVD

Dimension  
 "A" + "B"

Tubing Size    Flange Style

Example: GSWL    --    330300    --    H    --    CR

All grab bars must only be installed using sufficient in-wall backing material.

# SEACHROME

Seachrome Corporation  
 1906 East Dominguez Street  
 Long Beach, California 90810  
 Phone: (800) 955-2476  
 Fax: (800) 444-3380

Description:

## WALL TO FLOOR WITH LEG (Right Hand)

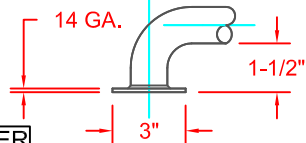
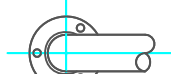
Seachrome Part #  
 GSWR-Series

Customer Part #

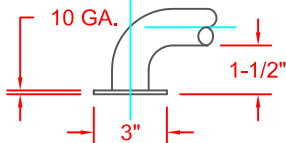
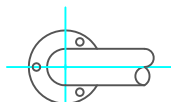
11-27-2012

### FLANGE STYLES

#### EXPOSED SCREW FLANGES

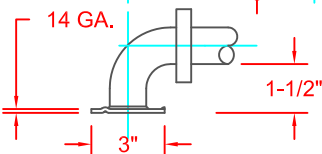
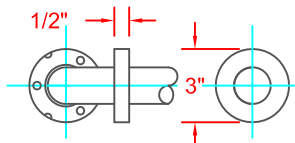


ER



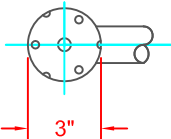
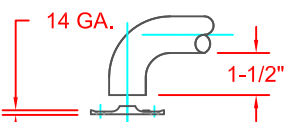
EW

#### CONCEALED SCREW FLANGES



CR

#### CONCEALED BOLT-ON



CB

### TUBING MATERIAL:

- "S" = Type 304 (18-8) Stainless Steel     "B" = 260 Alloy Solid Brass
- "D" = PVD finish over type 304 (18-8) Stainless Steel (Specify Color \_\_\_\_\_ )
- "P" = Powdercoated type 304 (18-8) Stainless Steel (Specify Color \_\_\_\_\_ )

### TUBING SIZE:

- "Q" = 1-1/4" (32mm) O.D. x .049" (18ga.) (1.2mm) Wall Thickness.
- "H" = 1-1/2" (38mm) O.D. x .049" (18ga.) (1.2mm) Wall Thickness

### FLANGE STYLE:

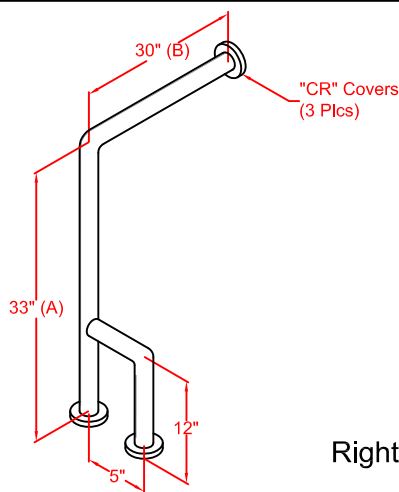
The following mounting flanges are constructed of Type 304 (18-8) Stainless Steel, Heliarc Welded to the bar to form an integral structural unit.

- "ER" 14 ga. (2.0mm) x 3" (76mm) dia. on 1-1/4" bars.  
 12 ga. (2.8mm) x 3" (76mm) dia. on 1-1/2" bars.
- "EW" 10 ga. (3.6mm) x 3" (76mm) dia.
- "CR" 14 ga. (2.0mm) x 3" (76mm) dia. on 1-1/4" bars.  
 12 ga. (2.8mm) x 3" (76mm) dia. on 1-1/2" bars.
- "CB" 14 ga. (2.0mm) x 3" (76mm) dia.

The following flange is constructed of type 304 (18-8) Stainless Steel bolted to a threaded insert to form a structural unit.

### WALL CLEARANCE:

On straight bars, the standard wall clearance between the finished wall surface and the inner bar edge is 1-1/2" (38mm). Other Clearances upon request.



Right Hand Shown

### MADE IN THE USA

All bars meet Federal specifications WW-P 541/8b, Amendment 1, 16 April, 1990 ANSI 117.1 all FHA, VA & HUD specifications and

### COMPLIES WITH ALL ADA REQUIREMENTS



S= Satin #304 Stainless Steel  
 X= Polished #304 Stainless Steel  
 Y= Peened w/satin ends  
 Z= Peened w/polished ends  
 B= Polished #260 Brass  
 P= Powder Coated #304 Stainless  
 D= PVD

Dimension  
 "A" + "B"

Tubing  
 Size      Flange  
                  Style

Example: GSWR -- 330300 -- H -- CR

All grab bars must only be installed using sufficient in-wall backing material.