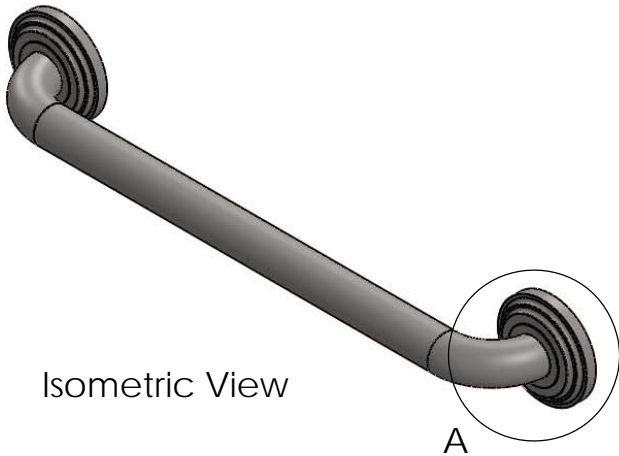
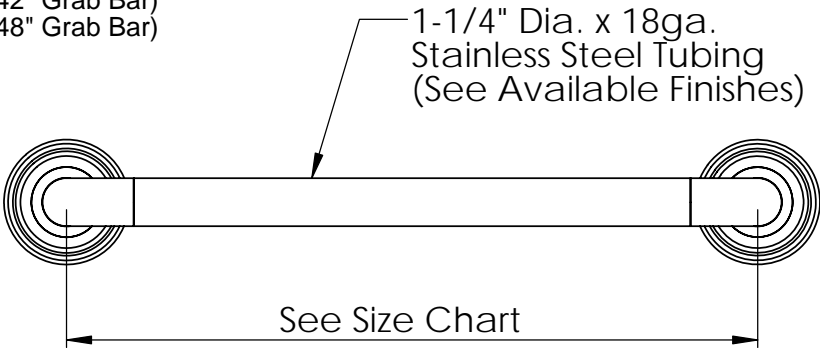
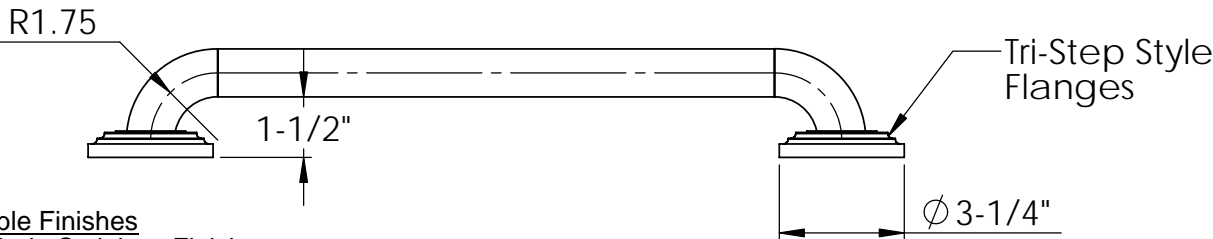


Grab Bar Size Chart

- GSS-180-QP4 (18" Grab Bar)
- GSS-240-QP4 (24" Grab Bar)
- GSS-360-QP4 (36" Grab Bar)
- GSS-420-QP4 (42" Grab Bar)
- GSS-480-QP4 (48" Grab Bar)

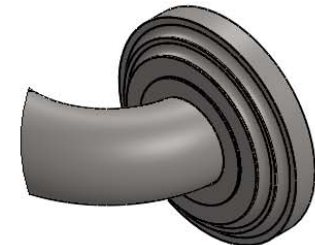


Isometric View



Available Finishes
SS = Satin Stainless Finish
PS = Polished Stainless

Powder Coat Colors
WT = White
AL = Almond
BI = Biscuit
PB = Polished Brass
BK = Black
WW = White Wrinkle
AW = Almond Wrinkle
SN = Satin Nickel
BR = Bronze



DETAIL A
SCALE 2 : 5

PROPRIETARY AND CONFIDENTIAL
THE INFORMATION CONTAINED IN THIS
DRAWING IS THE SOLE PROPERTY OF
SEACHROME CORPORATION. ANY
REPRODUCTION IN PART OR AS A WHOLE
WITHOUT THE WRITTEN PERMISSION OF
SEACHROME CORPORATION IS
PROHIBITED.

		UNLESS OTHERWISE SPECIFIED:		NAME	DATE
		DIMENSIONS ARE IN INCHES	DRAWN	Montoya	12-19-12
		TOLERANCES:	CHECKED		
		FRACTIONAL ±	ENG APPR.		
		ANGULAR: MACH ± BEND ±	MFG APPR.		
		TWO PLACE DECIMAL ±	Q.A.		
		THREE PLACE DECIMAL ±	COMMENTS:		
		INTERPRET GEOMETRIC TOLERANCING PER:			
		MATERIAL			
		1-1/4" x 18ga S.S. Tubing			
NEXT ASSY	USED ON	FINISH			
APPLICATION		DO NOT SCALE DRAWING			

Seachrome Corporation

TITLE: Coronado
Platinum Grab Bar
w/ Tri-Step Flanges

SIZE DWG. NO.
A GSS-QP4 (Series)

SCALE: 1:5 WEIGHT: SHEET 1 OF 1