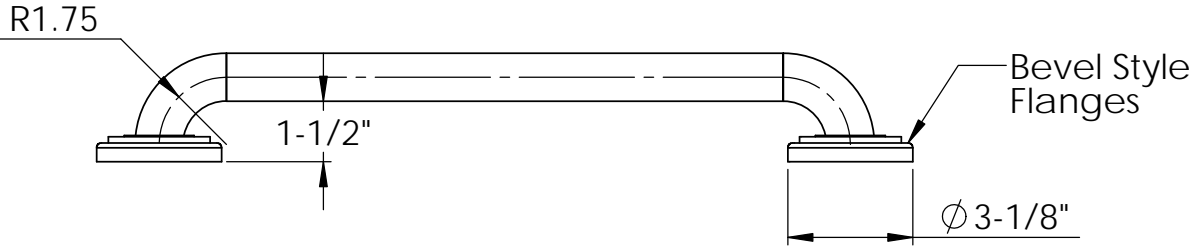
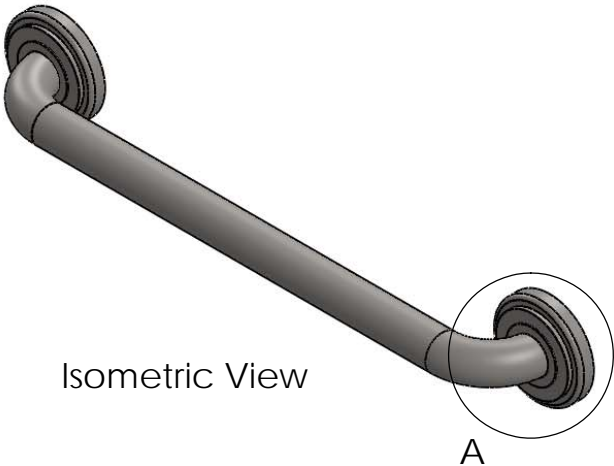
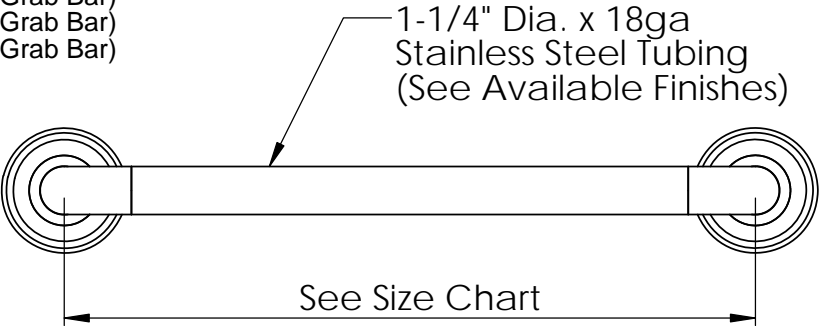


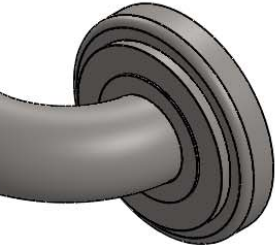
Grab Bar Size Chart

- GSS-180-QP1 (18" Grab Bar)
- GSS-240-QP1 (24" Grab Bar)
- GSS-360-QP1 (36" Grab Bar)
- GSS-420-QP1 (42" Grab Bar)
- GSS-480-QP1 (48" Grab Bar)



Available Finishes
SS = Satin Stainless Finish
PS = Polished Stainless

Powder Coat Colors
WT = White
AL = Almond
BI = Biscuit
PB = Polished Brass
BK = Black
WW = White Wrinkle
AW = Almond Wrinkle
SN = Satin Nickel
BR = Bronze



PROPRIETARY AND CONFIDENTIAL
THE INFORMATION CONTAINED IN THIS
DRAWING IS THE SOLE PROPERTY OF
SEACHROME CORPORATION. ANY
REPRODUCTION IN PART OR AS A WHOLE
WITHOUT THE WRITTEN PERMISSION OF
SEACHROME CORPORATION IS
PROHIBITED.

| | | | | | |
|-------------|---------|--------------------------------------|-----------|---------|----------|
| | | UNLESS OTHERWISE SPECIFIED: | | NAME | DATE |
| | | DIMENSIONS ARE IN INCHES | DRAWN | Montoya | 12-19-12 |
| | | TOLERANCES: | CHECKED | | |
| | | FRACTIONAL ± | ENG APPR. | | |
| | | ANGULAR: MACH ± BEND ± | MFG APPR. | | |
| | | TWO PLACE DECIMAL ± | Q.A. | | |
| | | THREE PLACE DECIMAL ± | COMMENTS: | | |
| | | INTERPRET GEOMETRIC TOLERANCING PER: | | | |
| | | MATERIAL | | | |
| | | Ø 1-1/4" x 18ga S.S. Tubing | | | |
| NEXT ASSY | USED ON | FINISH | | | |
| APPLICATION | | DO NOT SCALE DRAWING | | | |

| | | | | | |
|--|---------------------------|---------|--|--------------|--|
| Seachrome Corporation | | | | | |
| TITLE: Coronado Platinum Grab Bar w/ Bevel Flanges | | | | | |
| SIZE | DWG. NO. GSS-QP1 (Series) | | | | |
| A | | | | | |
| SCALE: 1:5 | | WEIGHT: | | SHEET 1 OF 1 | |