

SEACHROME

Seachrome Corporation
1906 East Dominguez Street
Long Beach, California 90810
Phone: (800) 955-2476
Fax: (800) 444-3380

Description:

CORONADO SERIES 30" TOWEL BAR

Customer:

Customer Part #

700-2030

07-23-2015

This drawing and the information contained herein is proprietary to Seachrome Corp. and shall not be reproduced, copied or disclosed in whole, or part, or used for manufacturing or for any other purpose without the written permission of Seachrome Corporation.

MATERIALS

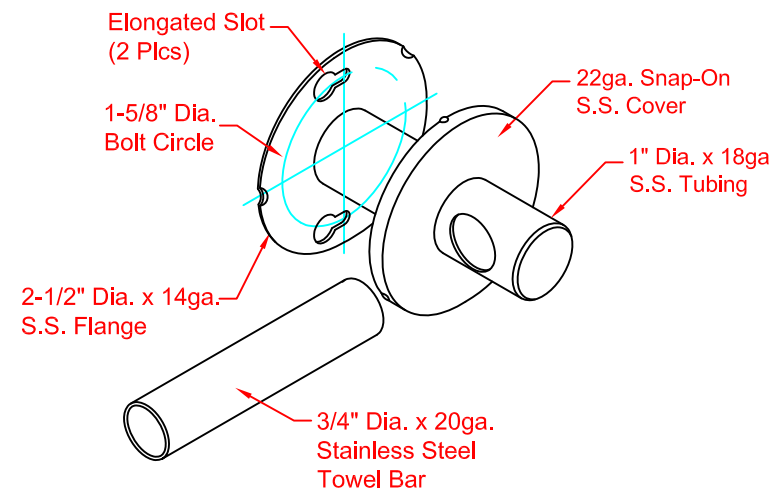
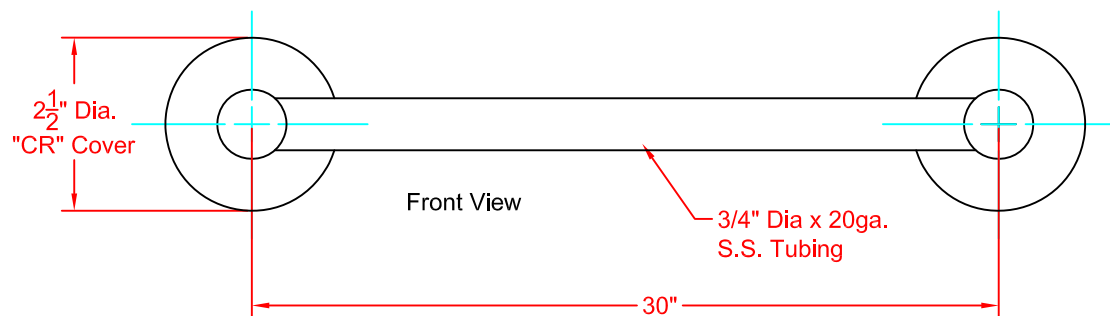
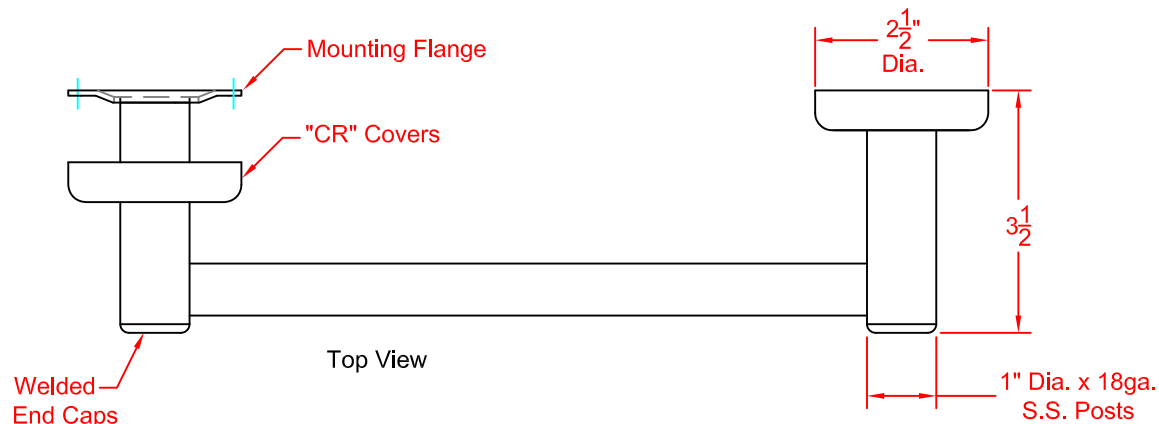
Mounting Flange: 2-1/2" Dia., 14ga. Stainless Steel.

Post: 1" Dia., 18ga. Stainless Steel.

Towel Bar: 3/4" Dia. x 20ga. Stainless Steel.

Concealed Snap-On Cover: 22ga. Stainless Steel.

(Select type of cover when ordering).



COVER STYLES



CR1 PLAIN
DESIGN



CR2 ROPE
DESIGN



CR3 RIDGE
DESIGN



CR4 STEP
DESIGN



CR5 BAND
DESIGN

Mounting Flange Detail