

# SEACHROME

Seachrome Corporation  
1906 East Dominguez Street  
Long Beach, California 90810  
Phone: (800) 955-2476  
Fax: (800) 444-3380

Description:

## CORONADO SERIES 24" TOWEL BAR

Customer:

Customer Part #

700-2024

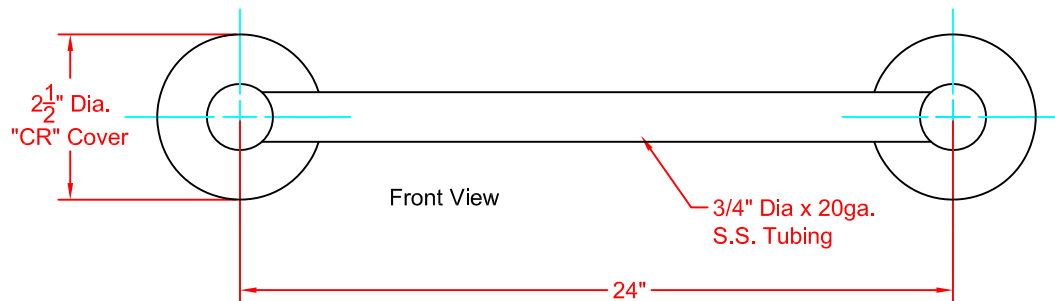
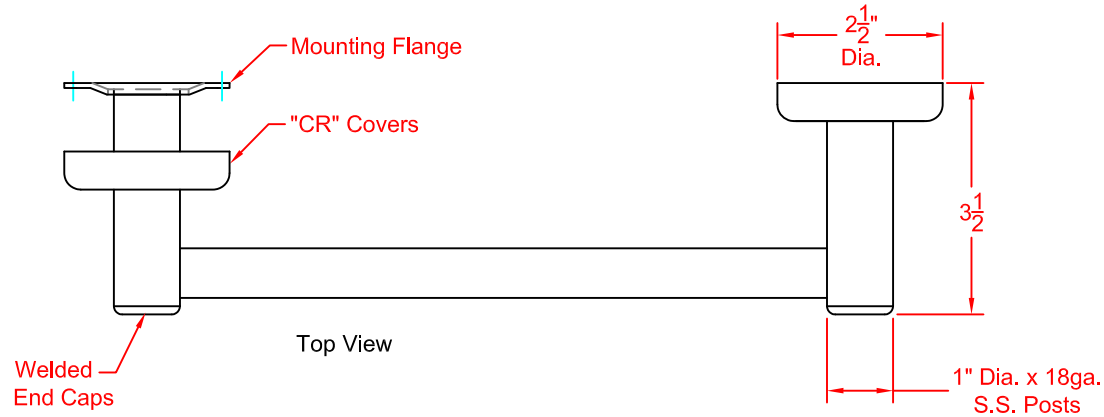
07-23-2015

This drawing and the information contained herein is proprietary to Seachrome Corp. and shall not be reproduced, copied or disclosed in whole, or part, or used for manufacturing or for any other purpose without the written permission of Seachrome Corporation.

### MATERIALS

Mounting Flange: 2-1/2" Dia., 14ga. Stainless Steel.  
Post: 1" Dia., 18ga. Stainless Steel.

Towel Bar: 3/4" Dia. x 20ga. Stainless Steel.  
Concealed Snap-On Cover: 22ga. Stainless Steel.  
(Select type of cover when ordering).



### COVER STYLES



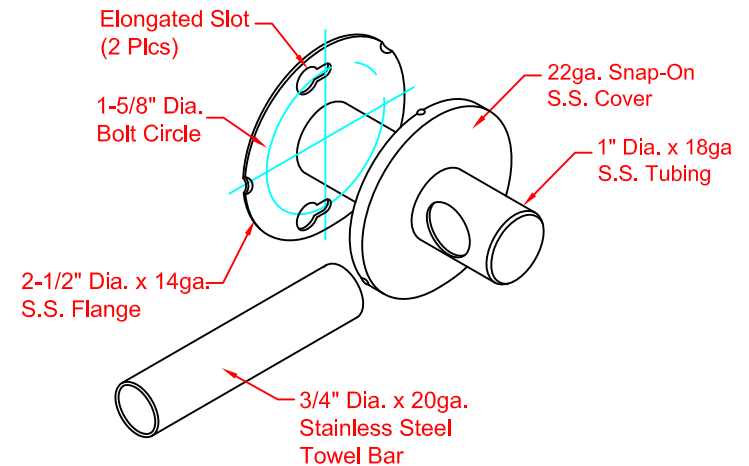
CK1 PLAIN  
DESIGN

CK2 ROPE  
DESIGN

CK3 RIDGE  
DESIGN

CK4 STEP  
DESIGN

CK5 BAND  
DESIGN



Mounting Flange Detail