

SEACHROME

Seachrome Corporation
1906 East Dominguez Street
Long Beach, California 90810
Phone: (800) 955-2476
Fax: (800) 444-3380

Description:

CORONADO SERIES 24" TOWEL BAR

Customer:

Customer Part #

740-2024-SS

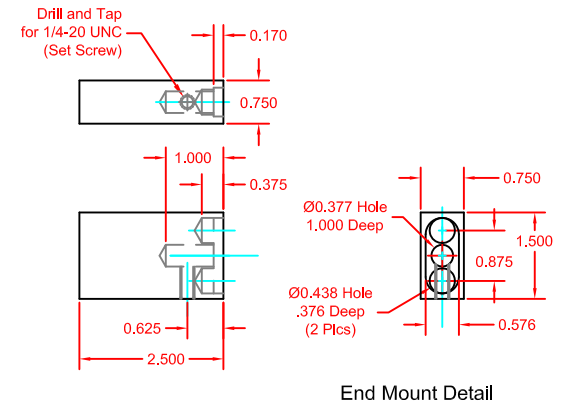
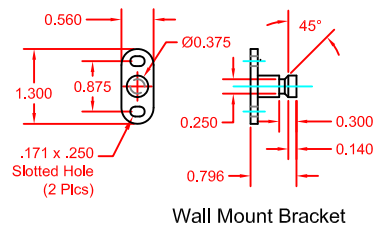
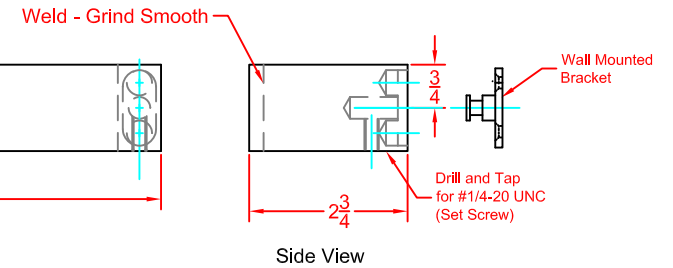
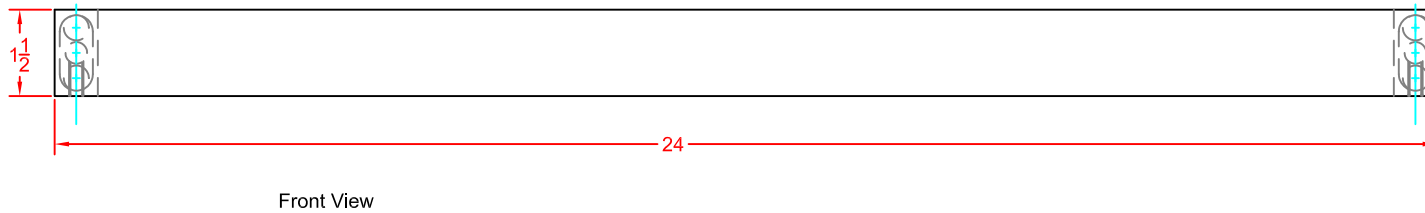
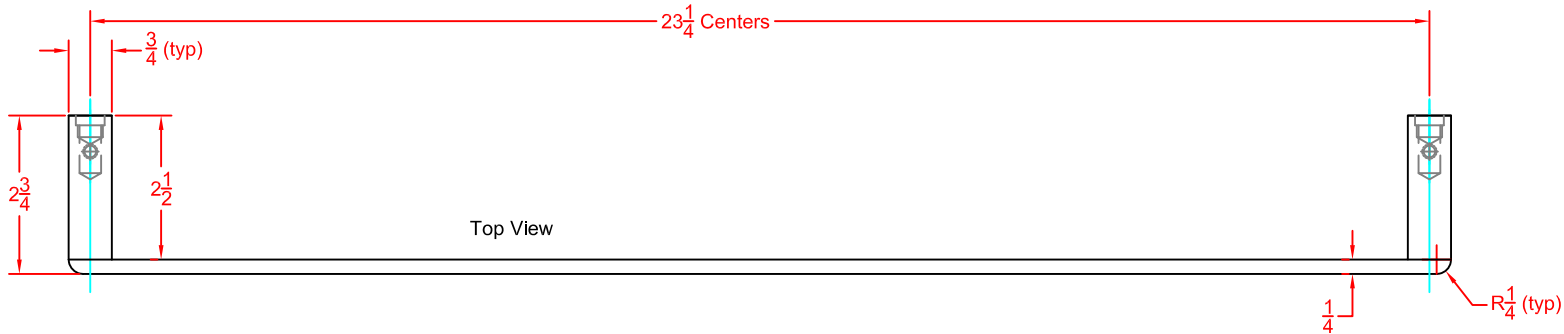
07-08-2015

This drawing and the information contained herein is proprietary to Seachrome Corp. and shall not be reproduced, copied or disclosed in whole, or part, or used for manufacturing or for any other purpose without the written permission of Seachrome Corporation.

MATERIALS

Crosspiece: 1-1/4" x 1/4" Solid Stainless Steel

Post: 1-1/2" x 3/4" Solid Stainless Steel



Note: Break All Sharp Corners

SEACHROME

Seachrome Corporation
 1906 East Dominguez Street
 Long Beach, California 90810
 Phone: (800) 955-2476
 Fax: (800) 444-3380

Description:

CORONADO SERIES 24" TOWEL BAR

Customer:

Customer Part #

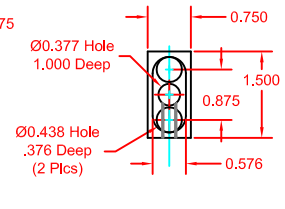
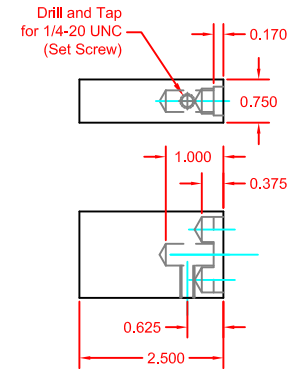
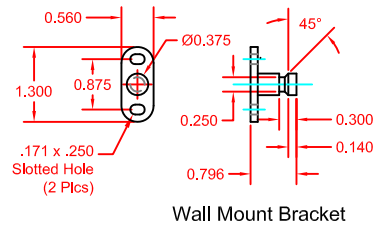
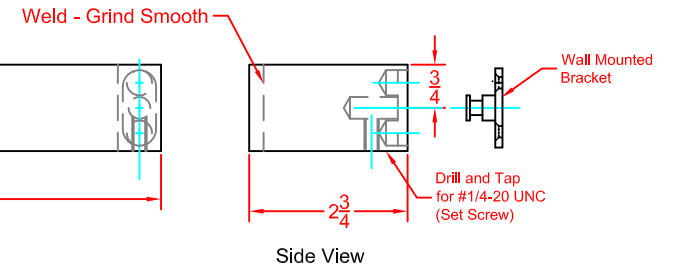
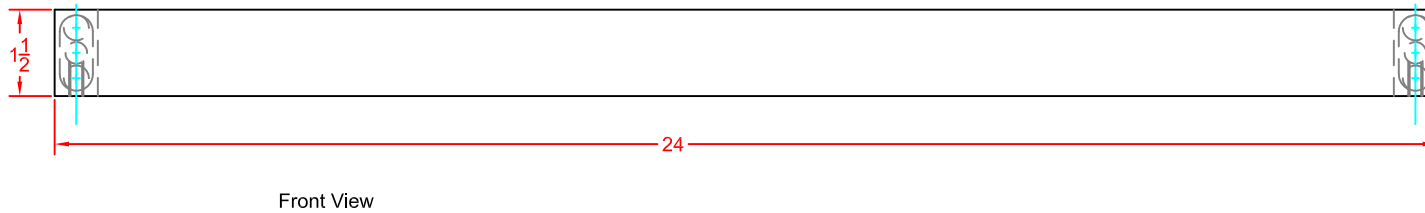
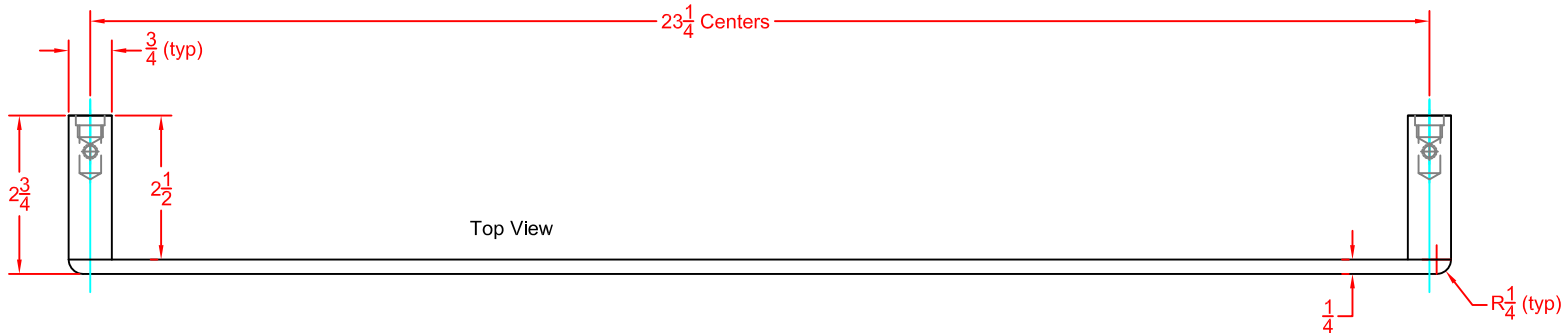
740-2024-PS

07-08-2015

This drawing and the information contained herein is proprietary to Seachrome Corp. and shall not be reproduced, copied or disclosed in whole, or part, or used for manufacturing or for any other purpose without the written permission of Seachrome Corporation.

MATERIALS

Crosspiece: 1-1/4" x 1/4" Solid Stainless Steel
 Post: 1-1/2" x 3/4" Solid Stainless Steel



Note: Break All Sharp Corners