

SEACHROME

Seachrome Corporation
1906 East Dominguez Street
Long Beach, California 90810
Phone: (800) 955-2476
Fax: (800) 444-3380

Description:

CORONADO SERIES 18" TOWEL BAR

Customer:

Customer Part #

700-2018

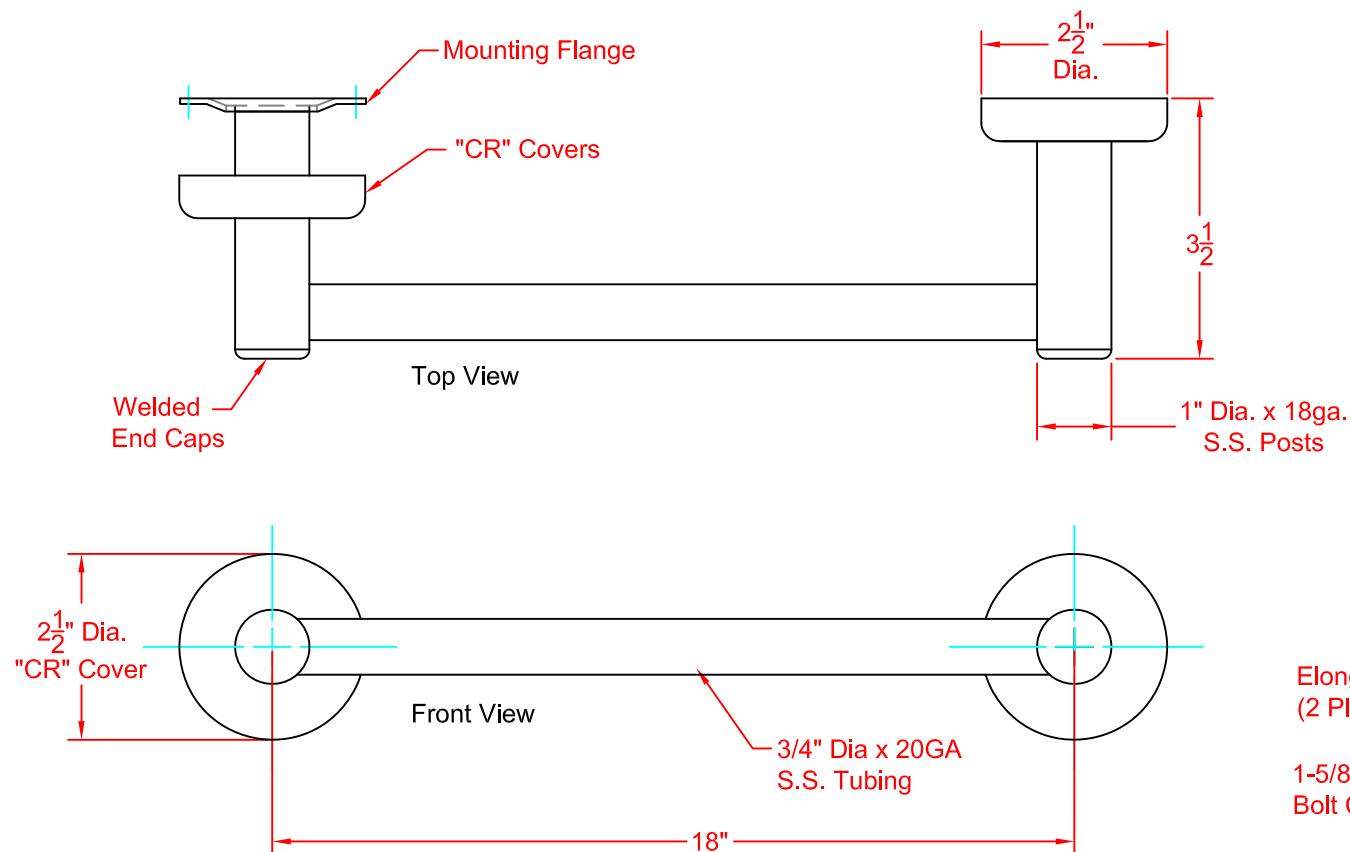
07-22-2015

This drawing and the information contained herein is proprietary to Seachrome Corp. and shall not be reproduced, copied or disclosed in whole, or part, or used for manufacturing or for any other purpose without the written permission of Seachrome Corporation.

MATERIALS

Mounting Flange: 2-1/2" Dia., 14ga. Stainless Steel.
Post: 1" Dia., 18ga. Stainless Steel.

Towel Bar: 3/4" Dia. x 20ga. Stainless Steel
Concealed Snap-On Cover: 22ga. Stainless Steel.
(Select type of cover when ordering).



COVER STYLES



CK1 PLAIN
DESIGN



CK2 ROPE
DESIGN



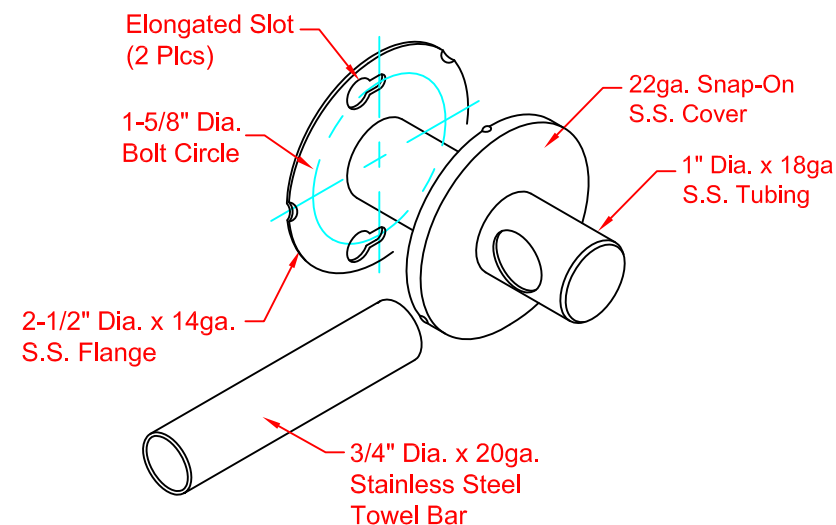
CK3 RIDGE
DESIGN



CK4 STEP
DESIGN



CK5 BAND
DESIGN



Mounting Flange Detail